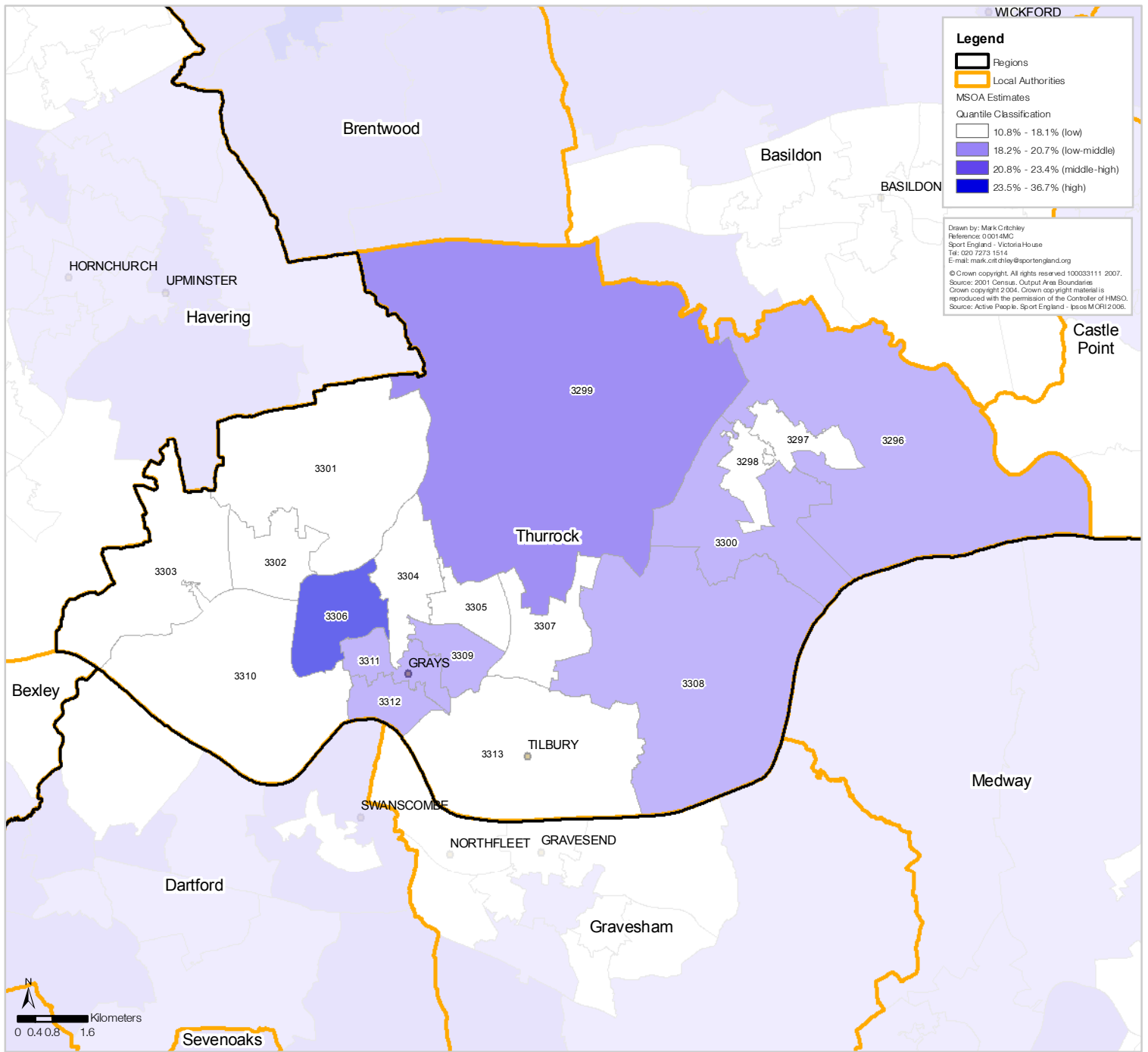


Thurrock Unitary Authority Participation (3 x 30) Estimates by Middle Super Output Area (MSOA)



Drawn by: Mark Critchley
 Reference: 0 0014/MC
 Sport England - Victoria House
 Tel: 020 7273 1514
 E-mail: mark.critchley@sportengland.org
 © Crown copyright. All rights reserved 100033111 2007.
 Source: 2001 Census, Output Area Boundaries
 Sport England - Victoria House
 Crown copyright 2004. Crown copyright material is reproduced with the permission of the Controller of HMSO.
 Source: Active People, Sport England - Ipsos MORI 2006.

*MSOA Code	Estimate	Lower **CL	Upper **CL
E02003296	19.17%	14.86%	24.45%
E02003297	16.91%	13.01%	21.76%
E02003298	17.34%	13.41%	22.22%
E02003299	21.37%	16.58%	27.20%
E02003300	19.13%	14.87%	24.36%
E02003301	17.87%	13.85%	22.83%
E02003302	16.04%	12.41%	20.56%
E02003303	16.32%	12.53%	21.05%
E02003304	16.99%	13.14%	21.77%
E02003305	17.99%	13.83%	23.15%
E02003306	25.86%	20.38%	32.33%
E02003307	15.64%	12.07%	20.11%
E02003308	18.52%	14.32%	23.70%
E02003309	19.86%	15.43%	25.27%
E02003310	17.71%	13.74%	22.61%
E02003311	18.70%	14.50%	23.87%
E02003312	20.18%	15.72%	25.60%
E02003313	15.15%	11.72%	19.44%

*Add E0200 to MSOA map label to reference correct code in table.
 ** Confidence Level

Participation is defined as the percent of the adult population participating in at least 30 minutes of sport and active recreation (including recreational walking and cycling) of at least moderate intensity on at least 3 days a week.